



MADE IN CANADA, FOR CANADIAN WINTERS



TRUE NORTH WOOD HEATERS
TN10 & TN20 FREESTANDING
TN20 INBUILT

FREESTANDING

True North wood heaters offer an exceptional cost to performance ratio. Featuring quad burn tubes as part of the combustion system, and fully firebrick lined, the TN10 and TN20 are an effective solution for a price-minded wood heater. Each wood heater is engineered for high efficiency and constructed with 10-gauge steel, cast iron door, and a clean glass airwash system. 100% made in Canada.



TN10 FREESTANDING

AVAILABLE ON LEGS ONLY

Heat Output	120–150 m²	
Efficiency	★★★★★	64%
Emissions	★★★★★	1.2 gm/kg
Burn Time	6–8 hours	
Log Size (max)	25–30 cm	
Weight	89 kg	

TN20 FREESTANDING

AVAILABLE ON LEGS OR PEDESTAL

Heat Output	200–220 m²	
Efficiency	★★★★★	64%
Emissions	★★★★★	1.2 gm/kg
Burn Time	8–12 hours	
Log Size (max)	40–45 cm	
Weight	154 kg	

FEATURES

100% Canadian made: Built with quality and performance
 Quad burn performance with 4 Secondary air tubes:
 Reduces emissions, increases performance
 Outside air for combustion ready: Perfect for new homes,
 Large single lever control: Easy to use
 10-gauge steel construction & cast iron door: Quality design

Fully firebrick lined: No exposed steel in the firebox

TN10 – Legs only
 TN20 Options - Leg or Pedestal
 Optional fan available

INBUILT

Convert an existing fireplace into a source of efficient heat with the TN20 inbuilt wood heater. This powerful firebox will heat small to medium spaces, burn cleanly and will offer years of trouble free warmth. The cast iron door tightly seals the firebox to avoid unnecessary air loss, while clean air-wash technology ensures a full view of the fire while in use. 100% made in Canada.



TN20 INBUILT

Heat Output	200–220 m²	
Efficiency	★★★★★	67%
Emissions	★★★★★	1.2 gm/kg
Burn Time	8–12 hours	
Log Size (max)	40–45 cm	
Weight	128 kg	

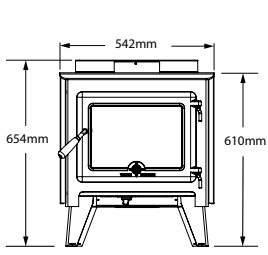


FEATURES

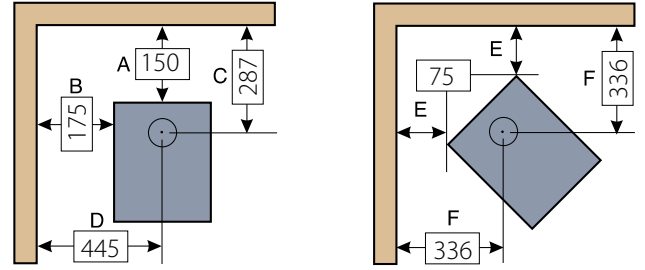
100% Canadian made: Built with quality and performance
Quad burn performance with 4 Secondary air tubes: Reduces emissions, increases performance
Large single lever control: Easy to use

10-gauge steel construction & cast iron door: Quality design
Fully firebrick lined: No exposed steel in the firebox
Includes 2 speed fan

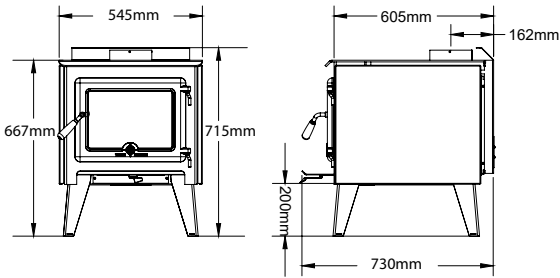
TN10 FREESTANDING



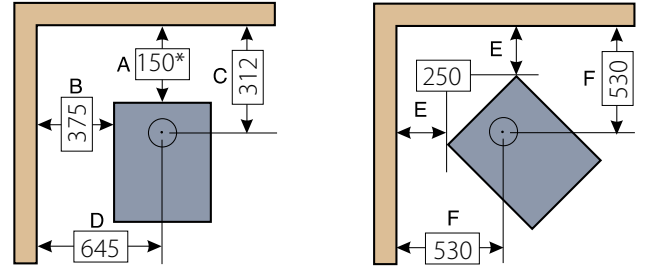
CLEARANCES TO COMBUSTIBLES (MM)



TN20 FREESTANDING

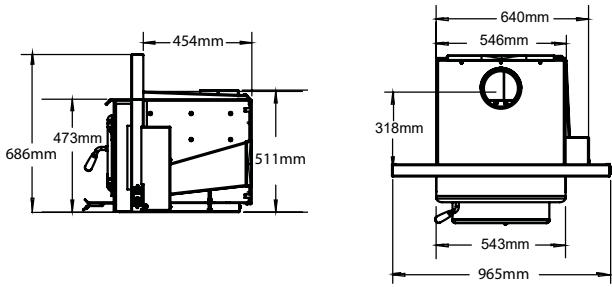


CLEARANCES TO COMBUSTIBLES (MM)

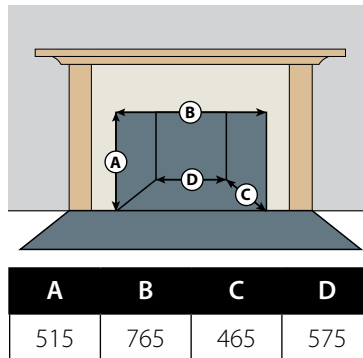


* Can reduce rear clearance to 75mm with Pivot's Insulated Room Sealed Flue

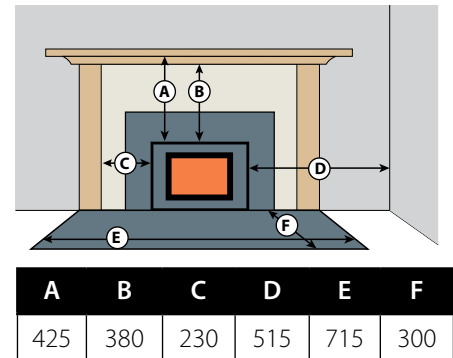
TN20 INBUILT



MINIMUM FIREPLACE OPENING (MM)



CLEARANCES TO COMBUSTIBLES (MM)



HEARTH REQUIREMENTS (MM)

	Minimum Floor Protector (width x length)	Extending in front of door opening	From side of door opening	Thickness
TN10 FREESTANDING	715 x 835	300	200	9
TN20 FREESTANDING	714 x 1055	300	200	9
TN20 INBUILT (545w x 720d x 110 thick Clay Bricks)	715 x 300	300	200	110

* all products subject to change without warning Due to the limitations of the printing process, it is not possible to replicate colours exactly in a print format. Please check with your local Pacific Energy retailer for colour samples.

Canadian-made Wood stoves and Inbuilts proudly distributed by Pivot Stove & Heating Australia in conjunction with Pacific Energy Fireplace Products

For more information and current product updates, visit pivotstove.com.au

