

Rinnai



SS850 Gas Fire

SS850 Inbuilt



SS850 Inbuilt

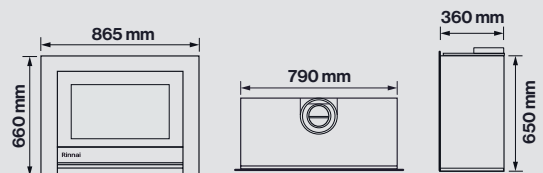
Inspired by the much-loved Rinnai Sapphire, the SS850 is a stylish and versatile gas fire that is perfect for most homes. The modernised aesthetic, and the replacement of the glass heat shield with a barely visible mesh will ensure the SS850 will be another firm favourite Rinnai gas fire.

Features

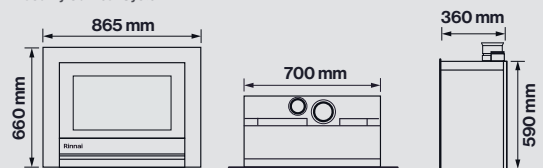
- 3.9* star energy efficiency
- High maximum heat output of 6.6 kW
- Premium Classic Fascia available for villa-style living spaces
- Subtle mesh heat shield
- Direct vent, room-sealed flue system
- Flue system options; vertical colinear flexi flue, or ridged coaxial
- Flexible install options; masonry inbuilt or into mock chimney
- Capable to be Wi-Fi enabled (with the addition of the Wi-Fi module)
- Available in LPG and Natural Gas
- Includes 'simple-to-use' infrared remote control

Dimensions

Mock Chimney Coaxial System



Masonry Colinear System



SS850 Freestander



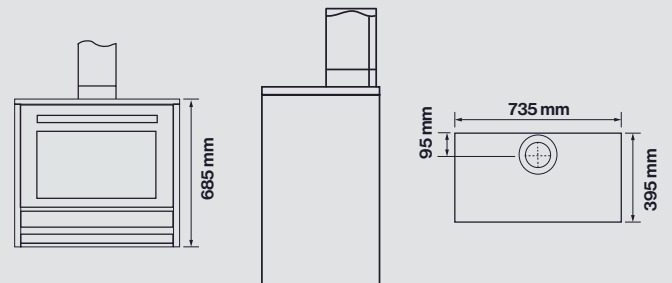
SS850 Freestander

With unique, modern style, the SS850 Freestander provides design flexibility that can be integrated into any living space. The Freestander is designed to be installed on a choice of fixed furniture,* giving unlimited design opportunities.

Features

- 3.9* star energy efficiency
- High maximum heat output of 6.6 kW
- Subtle mesh heat shield
- Uses the coaxial direct vent flue system, sealed from the room
- Capable to be Wi-Fi enabled (with the addition of the Wi-Fi module)
- Available in LPG and Natural Gas
- Includes 'simple-to-use' infrared remote control

Dimensions



*See SS850 Freestanding Installation Guide for details on compatible furniture materials.

SS850 Freestander with Cabinet Base



SS850 Freestander with Cabinet Base

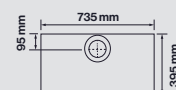
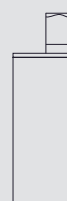
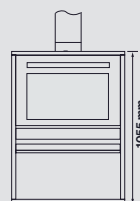
With simple modern lines, the SS850 Freestander is the perfect no-fuss replacement for a freestanding woodburner. The glowing logset and realistic flame picture will bring ambience and warmth to those cold winter nights. The Cabinet base option hides its gas connection and power supply behind a false divider wall to give the unit its clean and elegant look to suit any home design aesthetic.

Features

- 3.9* star energy efficiency
- High maximum heat output of 6.6 kW
- Subtle mesh heat shield
- Uses the coaxial direct vent flue system, sealed from the room
- Capable to be Wi-Fi enabled (with the addition of the Wi-Fi module)
- Available in LPG and Natural Gas
- Includes 'simple-to-use' infrared remote control

Dimensions

Freestander with Cabinet Base



SS850 Freestander with Plinth Base



SS850 Freestander with Plinth Base

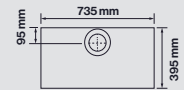
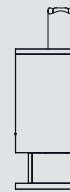
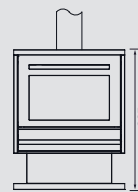
With simple modern lines, the SS850 Freestander is the perfect no-fuss replacement for a freestanding woodburner. The glowing logset and realistic flame picture will bring ambience and warmth to those cold winter nights. The Plinth base provides a more traditional design aesthetic that draws inspiration from a wood log fire heater.

Features

- 3.9* star energy efficiency
- High maximum heat output of 6.6 kW
- Subtle mesh heat shield
- Uses the coaxial direct vent flue system, sealed from the room
- Capable to be Wi-Fi enabled (with the addition of the Wi-Fi module)
- Available in LPG and Natural Gas
- Includes 'simple-to-use' infrared remote control

Dimensions

Freestander with Plinth Base



Specifications

	SS850 Freestander	SS850 Inbuilt
Install Options		
Freestanding	•	
Inbuilt mock chimney		•
Existing masonry		•
Accessory compatibility		
Black fascia (supplied)	•	•
Classic fascia (optional)		•
Burn media logset	•	•
Mesh heat guard (supplied)	•	•
Masonry infill panel (optional)		•
Flue system		
Freestander coaxial flue	•	
Inbuilt colinear flue		•
Inbuilt coaxial flue		•
Performance		
Gas Type	NG & LPG	NG & LPG
Max Input (MJ/h)	30	30
Min Input (MJ/h)	14	14
Efficiency		
Heat Output Max (kW)	6.6	6.6
Heat Output Min (kW)	3.0	3.0
Star rating	3.9*	3.9*
Speed fan	2 speed	2 speed
Remote control	•	•
Wi-Fi (via Wi-Fi retrofit kit)*	•	•

* Wi-Fi is available but requires the purchase of an additional Wi-Fi accessory kit.

*Star-rating depends on installation and flueing configuration.

Rinnai Gas Fires appliances are fitted with either a 'heat guard mesh' or layered glass as the primary safety guards. Some installations, for example where young children are present, may require the purchase of an additional, third party safety guard. For more information please refer to owner and installation manual accompanying the heater. With our policy of continuous improvement, we reserve the right to change, or discontinue at any time, specifications or designs without notice.

Note: All images contained within this brochure are for illustrative purposes only, the colours and finishes of the products featured are as close to the respective product range as photographic lighting and printing processes allow.

Rinnai Australia Pty Ltd

ABN 74 005 138 769

100 Atlantic Drive,
Keysborough, Victoria 3173

For further information
call 1300 555 545 or visit
rinnai.com.au

TOTAL HOME COMFORT



HOT WATER



HEATING



COOLING

Rinnai